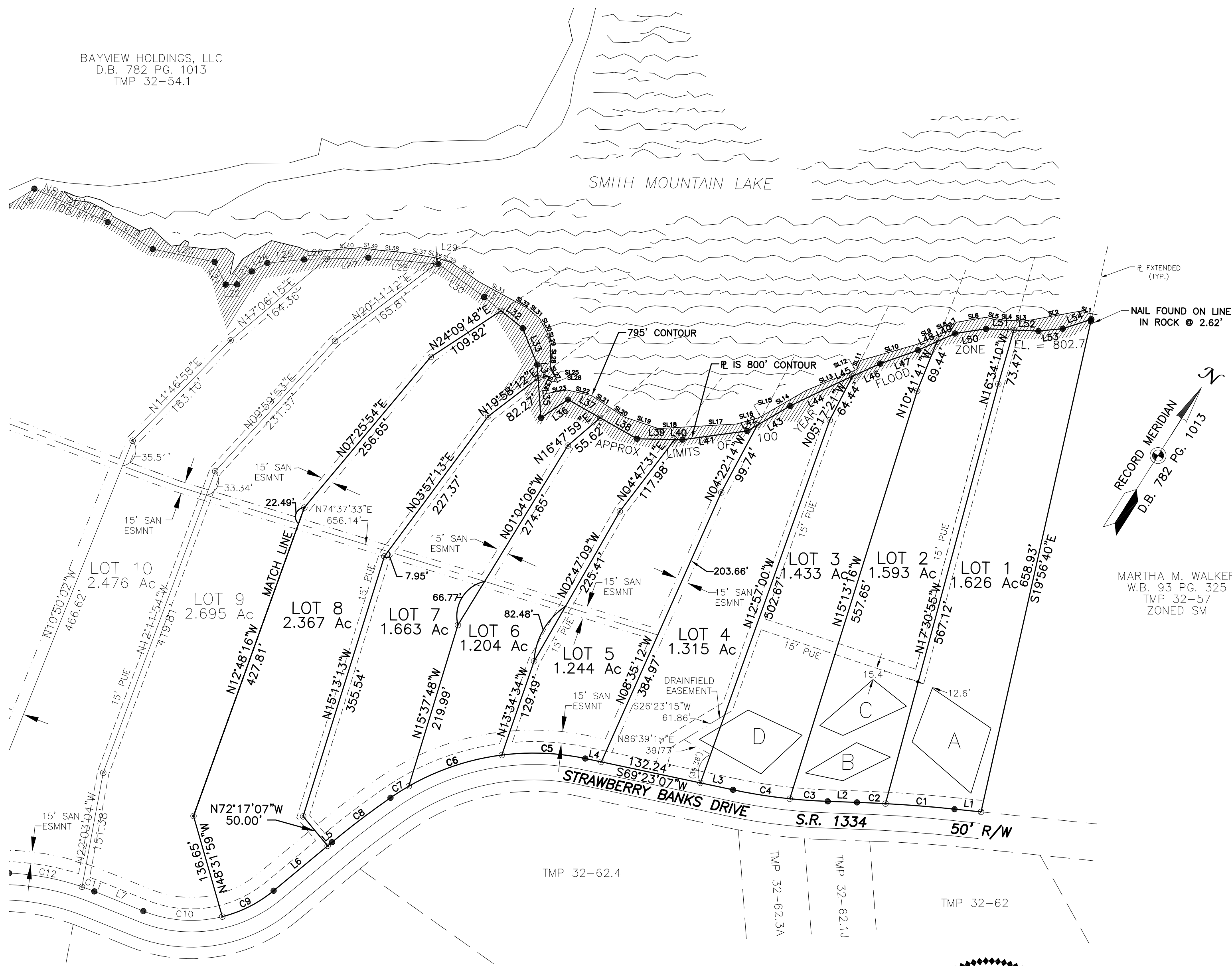


BAYVIEW HOLDINGS, LLC  
D.B. 782 PG. 1013  
TMP 32-54.1

SMITH MOUNTAIN LAKE



F. EXTENDED (TYP.)  
NAIL FOUND ON LINE IN ROCK @ 2.62'  
RECORD MERIDIAN  
D.B. 782 PG. 1013

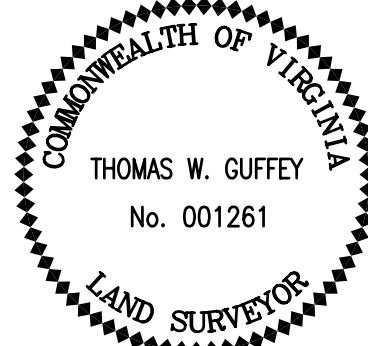
MARTHA M. WALKER  
W.B. 93 PG. 325  
TMP 32-57  
ZONED SM

LOT	LINE	LENGTH	BEARING
1	SL1	17.66'	S68°36'03"W
	SL2	72.28'	S47°15'35"W
	SL3	10.82'	S59°40'30"W
2	SL4	25.53'	S59°40'30"W
	SL5	15.09'	S70°42'34"W
	SL6	39.02'	S47°51'38"W
	SL7	10.63'	S04°43'25"W
	SL8	16.06'	S33°01'50"W
3	SL9	33.28'	S33°01'50"W
	SL10	76.23'	S40°46'53"W
	SL11	12.18'	S06°31'32"W
	SL12	1.74'	S34°57'52"W
4	SL13	70.59'	S34°57'52"W
	SL14	65.26'	S27°23'30"W
5	SL15	5.26'	S27°23'30"W
	SL16	30.20'	S41°37'19"W
	SL17	68.59'	S54°02'46"W
6	SL18	33.60'	S54°02'46"W
	SL19	46.90'	S76°05'31"W
	SL20	20.72'	N89°22'02"W
7	SL21	30.38'	N89°22'02"W
	SL22	32.59'	S70°27'06"W
	SL23	28.76'	S48°14'27"W
	SL24	18.04'	N05°14'54"W
	SL25	4.02'	N61°11'54"E
	SL26	4.15'	N79°29'47"E
	SL27	20.80'	N61°21'05"W
8	SL28	30.35'	N32°07'56"W
	SL29	17.30'	N47°18'21"W
	SL30	20.54'	N60°21'05"W
	SL31	22.09'	N82°14'46"W
	SL32	17.23'	S85°51'49"W

TMP 32-62.1B

LINE	LENGTH	BEARING
L1	34.80'	S63°22'31"W
L2	38.22'	S59°23'39"W
L3	43.51'	S69°23'07"W
L4	21.49'	S69°23'07"W
L5	6.72'	S17°42'53"W
L6	91.64'	S17°42'53"W
L32	36.28'	S83°49'19"E
L33	50.90'	S54°11'05"E
L34	17.84'	S36°39'53"E
L35	52.09'	S36°39'53"E
L36	42.66'	N23°16'05"E
L37	48.37'	N87°02'03"E
L38	55.32'	N87°02'03"E
L39	49.19'	N58°33'59"E
L40	10.17'	N58°33'59"E
L41	85.40'	N49°44'19"E

LINE	LENGTH	BEARING
L42	15.14'	N27°11'43"E
L43	49.85'	N27°11'43"E
L44	65.72'	N31°33'06"E
L45	24.05'	N32°59'26"E
L46	40.11'	N32°59'26"E
L47	52.20'	N37°55'07"E
L48	27.19'	N32°59'11"E
L49	25.56'	N32°59'11"E
L50	41.23'	N48°48'13"E
L51	36.36'	N59°54'59"E
L52	32.08'	N59°54'59"E
L53	31.85'	N51°54'24"E
L54	39.38'	N39°14'50"E



IF THIS DRAWING IS A REDUCTION GRAPHIC SCALE MUST BE USED  
SCALE: 1" = 100'

CURVE	DELTA	RADIUS	LENGTH	TANGENT	CHORD	CHORD BEARING
C1	2°49'09"	1837.00'	90.39'	45.20'	90.38'	S61°57'57"W
C2	1°09'43"	1837.00'	37.26'	18.63'	37.26'	S59°58'31"W
C3	3°58'47"	715.00'	49.66'	24.84'	49.65'	S61°23'02"W
C4	6°00'41"	715.00'	75.02'	37.54'	74.98'	S66°22'46"W
C5	19°11'52"	327.00'	109.57'	55.30'	109.05'	S59°47'11"W
C6	22°34'40"	327.00'	128.86'	65.28'	128.02'	S38°53'56"W
C7	4°56'30"	327.00'	28.20'	14.11'	28.19'	S25°08'20"W
C8	4°57'13"	1118.23'	96.68'	48.37'	96.65'	S20°11'29"W
C9	25°49'32"	168.00'	75.72'	38.52'	75.08'	S30°37'39"W

**W ASSOCIATES**  
ENGINEERS SURVEYORS PLANNERS  
147 MILL RIDGE ROAD  
LYNCHBURG, VIRGINIA 24502  
PHONE: 434.582.6175  
FAX: 434.582.6179

TITLE:  
**SUBDIVISION PLAT OF EMERALD BAY ESTATES LOTS 1 THRU 10**  
GILLS CREEK MAGISTERIAL DISTRICT  
FRANKLIN COUNTY, VIRGINIA

SCALE: 1" = 100'  
DATE: 3-4-04  
DRAWN BY: EML  
WWA NUMBER: 203099  
FILE: 3099-SUB PLAT  
SHEET: 3 OF 3

SURVEYED AUGUST 7, 2003